

1,037 Buildings

244 Single Houses

18 Libraries

653 Architects

63 Schools

8 Embassies

6 Geographical Regions

11 Art Galleries

28 Hotels

89 Countries

76 Museums

6 Railway Stations

7 Swimming Pools

2 Town Halls

57 Office Buildings

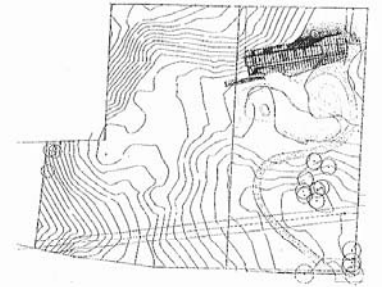
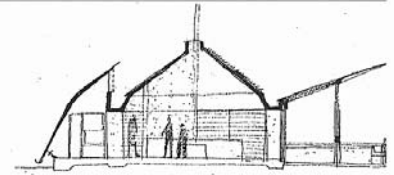
38 Universities

8 International Airports



THE PHAIDON ATLAS OF 21ST CENTURY WORLD ARCHITECTURE

0028	Kangaloon, New South Wales, Australia	Kangaloon House	Glenn Murcutt	2000 RES
0029	Sydney, New South Wales, Australia	Sydney Airport, Qantas First Class Lounge	Woods Bagot Australian with Marc Newson and Sébastien Segers	2006 TRA



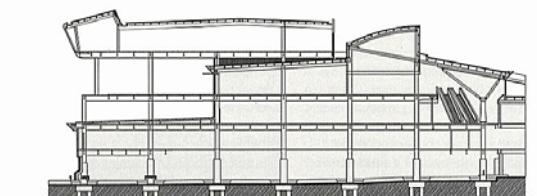
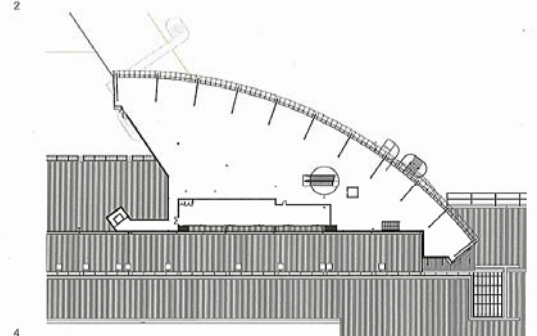
0028 This house sits on a rare piece of flat ground in the undulating rural landscape of the Southern Highlands, 200 km (124 miles) southwest of Sydney. The area experiences high temperatures in the summer and cold winds from the southwest in the winter, and the building's form responds to this varied climate. The house itself is 80 m (262 ft) in length and sits on an east-west axis. A corrugated iron wind deflector runs the length of the house along its southern side, driving wind from the southwest up and over the gable-profile roof of the main building. The roof's pitch and overhangs shelter windows from the hot summer sun, but allow light into the house in the winter. The north facade is characterized by protruding concrete screens, slatted timber screens and exposed concrete columns. The steel structure of which is independent from the reinforced concrete structure of

the main building. The gallery acts as the main circulation route, and its north-facing skylights fill the house with light. A thickened wall containing storage cupboards divides the gallery from the rest of the house. Beyond this, the house is one room deep. All rooms have a northerly aspect, and sliding aluminium-framed glazed doors allow access onto the northern terrace, creating a strong connection between interior spaces, the terrace and the landscape beyond. Rooms are arranged in a row, with private areas at each end and communal spaces between them. The interior walls and ceilings are painted white, cupboard doors are made from veneered timber and the floors are paved with porphyry. By opening and closing sliding slatted timber screens and glazed doors, the internal layout can be modified, connecting rooms to provide extra space for entertaining or dividing spaces to provide privacy when necessary.

- 1 North facade
- 2 Gable end of west facade
- 3 Screens protect exterior circulation from the wind
- 4 Section through building
- 5 Site plan

Client
Confidential
Area
Not available
Cost
Confidential
Coordinates
Confidential

0029 Sydney Airport, on the fringe of the city, houses the new Qantas Lounge. The lounge consists of a single floor structure attached to the fourth floor of the International Terminal. The project is part of a luxurious upgrade at the airport in 2008 in preparation for the arrival of the Qantas' Airbus A380 fleet. The curving facade was built to offer a 180 degree panoramic view of the boarding gates, with the city in the distance, and allows for the maximum amount of natural light to enter the space. The curving, radial shape echoes the aeronautical surroundings and was designed to inspire the romance associated with luxury travel. The entire front facade is supported by a series of *pilot* left unobstructed in anticipation of the construction of a Qantas Business Lounge. The windows are made of performance glass, which allows for control of thermal comfort and addresses the noise levels from airport operations. This facade is inclined to minimize internal reflections, and to prevent glare to the airfield below. The building's interior, designed by Marc Newson, continues the aviation theme. The lounge is divided into zones reflecting the requirements of the individual first-class traveller, from relaxation to entertainment and business. These areas include lounge space, a day spa, a restaurant and a library. The interior design includes a palette of colours, including deep reds, browns and aubergine, chosen for their calming influence and further establishes an ambience of luxury.



- 1 Detail of curving facade
- 2 Looking south towards lounge and terminal
- 3 View of the lounge interior
- 4 Plan of lounge
- 5 Longitudinal section through building

Client
Confidential
Area
2,050 m²/22,066 sq ft
Cost
Confidential
Coordinates
151 0407 151 1788